

seaBreeze

Georg Heeg eK

Get the best of both worlds – the power of the Seaside web framework for complex web applications combined with the ease of visual design as used in the mainstream website design suites.

With seaBreeze you get a next-generation web development platform that enables you to setup and maintain a complete Web2.0 Seaside application – from initial setup of the components (with the wizard functionality) through addition of widgets to these pages and positioning the elements on a page to finally doing the CSS layout inside the web browser.

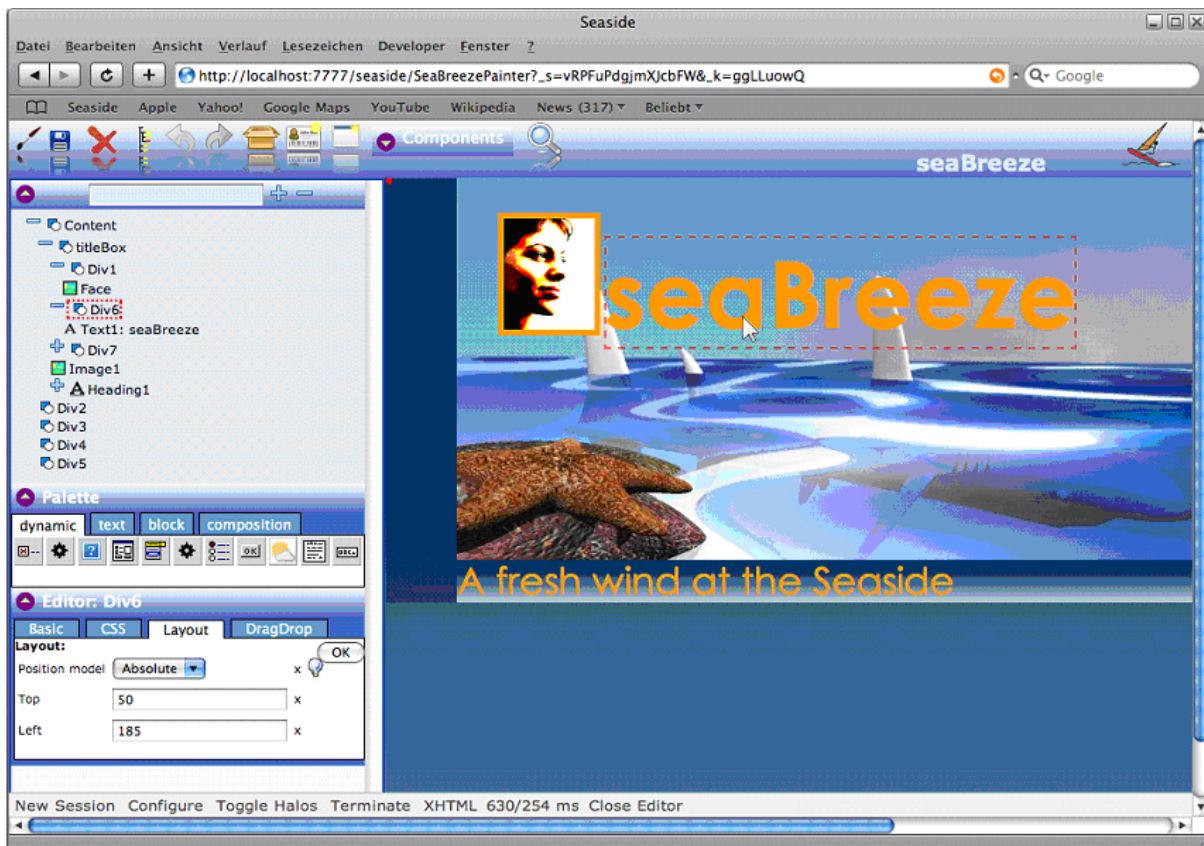
This enables both the Seaside newcomer and the experienced Smalltalk engineer to create and maintain applications on the fly without learning all HTML and CSS parameters by heart.

In addition you can still use the Seaside browser tools.

Features

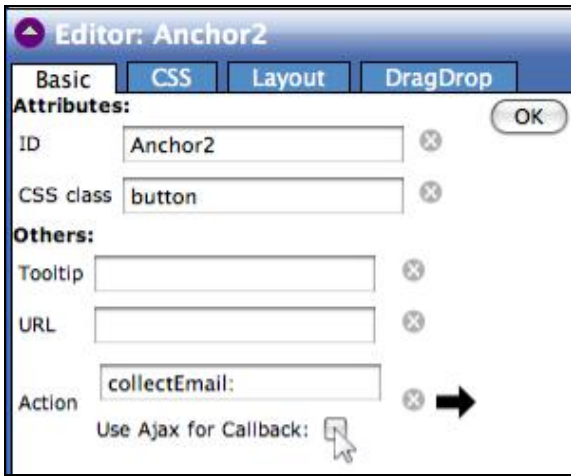
Graphical Editor

The seaBreeze editor enables the developer to choose new web elements from a palette and add them to the page, specifying the basic parameters for each element in the editor (inside the web browser, no roundtrip to the Smalltalk IDE necessary) and getting a live feedback because the element instantly appears on the web page.

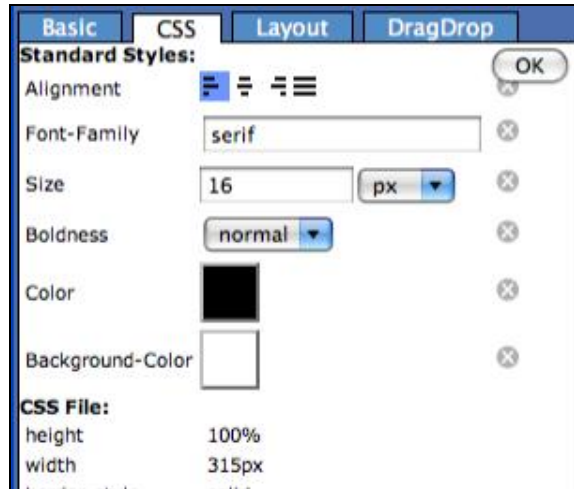


You can use the mouse to select the elements in the preview or move them to exactly the place you want them. This makes it quite easy to position elements on the web page despite all the complicated behavior related to absolute or relative positioning and floating elements.

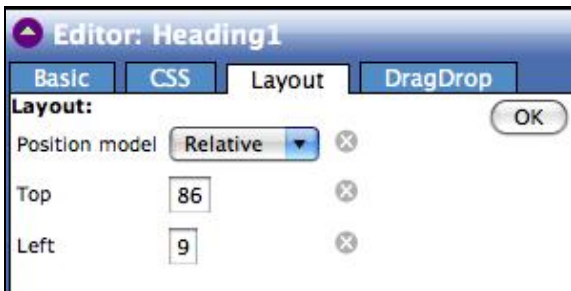
For all main attributes of every widget type there are special editors enabling you to easily setup your websites; one mouseclick on the element either in the preview or the navigator tree and the corresponding editor is shown – you may even add attributes.



Enable AJAX with one mouse click



See the CSS inherited from a CSS file together with your inline CSS

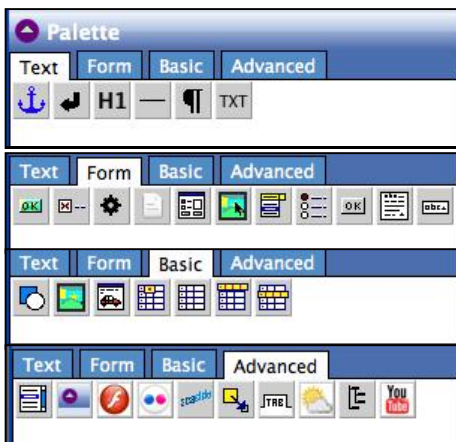


Get instant feedback when moving elements with the mouse



Jump to the Smalltalk browser with 1 click

Predefined Widgets

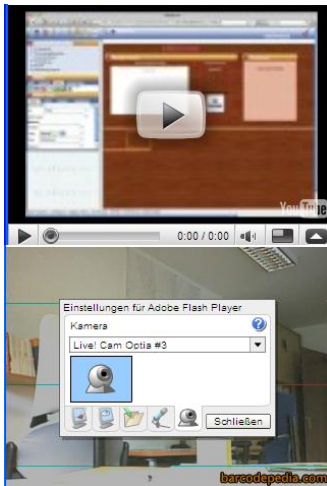


There is a load of predefined widgets apart from the standard ones helping you to setup and maintain „modern“ Web2.0 websites easily:

You can embed subcomponents (which can be any WAComponent), you get iterators that clone their containing layout for every element of a collection, you get drawers that can show or hide their contents by a mouse click, you get trees and dynamic tabs, you can add tag clouds or even a generic Seaside element that lets you embed any Seaside code into your web page.

All these widgets are easily configurable with almost no extra Smalltalk code to be written; whenever you have to define an aspect or an action in Smalltalk the seaBreeze editors create templates for the methods and let you jump directly into the Smalltalk browser to edit the method.

Integration of external resources (YouTube, Flickr, Flash)



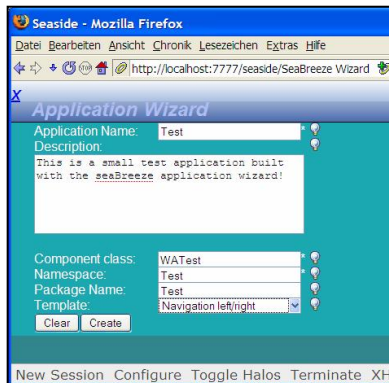
Put pictures from flickr or flash videos from YouTube into your page – all you have to know is the URL of the page, then seaBreeze will extract the exact location of the resource and embed it into your web page.

Embed Flash plug-ins by just supplying the location of the .swf file – seaBreeze will generate a widget embedding the Flash plug-in into your web page and ask for any (dynamic) flashVars you want to provide.

This enables you to for instance use your webcam with a Flash plug-in to scan barcodes, use the web service implementation in Smalltalk to query some external service for these barcodes and show the results in another seaBreeze widget.

Once again there are custom editors that let you configure the elements without effort, mostly without any Smalltalk code to write.

Wizard Support



The application wizard enables the developer to easily create a new web application without typing any Smalltalk code.

This is a good starting point for the Seaside novice who tries to build his first Seaside application but is also convenient for the experienced Seaside developer.

The wizard functionality guides the developer through the necessary steps to build a new web application, ensuring that the result will be fully functional.

Thus even the non-Smalltalker is able to build Seaside applications from scratch, making it possible that the Web designer

begins to build a new Seaside application and afterwards the Smalltalk developer puts in all the application logic.

Predefined Layouts

seaBreeze gives you the choice to use one of several predefined layouts for your new application, freeing you of always repeating the same basic steps to setup your new application and giving you some hints how to setup some of the “standard” layouts of modern web pages.

Conclusion

By using SeaBreeze it is possible to do all positioning, adding of HTML elements and layouting with CSS graphically in the web browser with live feedback.

That makes the whole development process much more Smalltalk-like because you do not have to write the code in your Visualworks browser, save it, open your web browser and check whether the result is what you wanted to accomplish.

Especially for beginners it is much easier to create a working web application (that is not a counter), but it is also easier to integrate a web designer in your development team because apart from changing the created CSS style sheet he can also do small fixes on a web page without having to fear to break the whole application.

Of course seaBreeze itself is written in seaBreeze...

Future Enhancements

HTML elements

A complete set of HTML elements.

CSS wizard

A wizard helping you to only use correct CSS code usable for the current element and even proposing CSS code for implementing your design ideas.

Import of Existing Seaside Pages

At the moment the seaBreeze editor functionality only works with elements that were created with this editor – comparable to the UIPainter which also only works on the existing WindowSpecs. An enhancement will be that you can import an existing Seaside page which is thereby converted into the new form that enables positioning and editing with the seaBreeze editor, thereby making it possible at every stage of the development process to switch to the seaBreeze editor and easily doing the changes in a graphical environment with direct for every change that is done.

Control Flow Editor / Enhanced Wizard Support

Enhanced wizard functionality to graphically setup the complete control flow of an application between different components, thereby creating complex web applications and really exploring the powers of Seaside.